

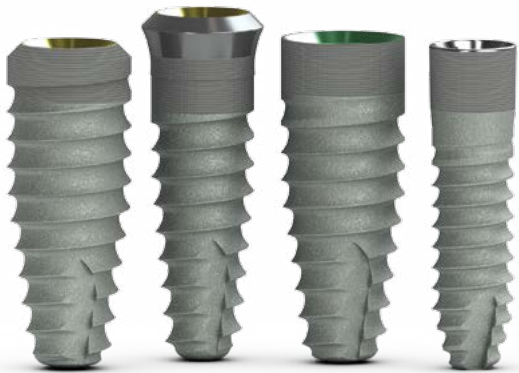
BIOHORIZONS

tapered HD surgical system



BIOHORIZONS[®]
SCIENCE • INNOVATION • SERVICE

tapered implant family

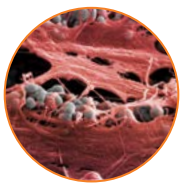


The Tapered Internal family of dental implants provide excellent primary stability, maximum bone maintenance and soft tissue attachment for predictable results. All implants can be placed with the same instrument kit giving you surgical convenience and flexibility to choose the ideal implants for each patient's needs.



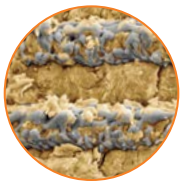
restorative ease

45° conical internal hex connection is color-coded for quick identification and component matching



connective tissue attachment

uniquely creates a physical connective tissue attachment



bone attachment

Laser-Lok® microchannels achieve superior osseointegration



optimized threadform

buttress thread engineered for superior stability over microthreaded implants

universal surgical kit

intuitive color-coded instrumentation used to place all BioHorizons tapered implants



table of contents

tapered plus implants	2-3
tapered internal implants	4-5
tapered tissue level implants	6
tapered HD surgical kit	7
individual kit components	8-10
ancillary instruments	11-12
ancillary kits	13
healing abutments and cover caps	14-15
temporary abutments	16
surgical manual introduction	17
surgical protocols	18
implant placement level & spacing	19
surgical kit & drill sequence	20
drill overview	21
osteotomy initialization	22
osteotomy modification	23
final bone preparation & drivers	24
implant transfer	25
healing protocols	26
appendix	27
icon legend	28
ordering, warranty information and references	29

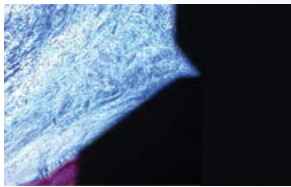
tapered plus

platform switching

designed to increase soft tissue volume

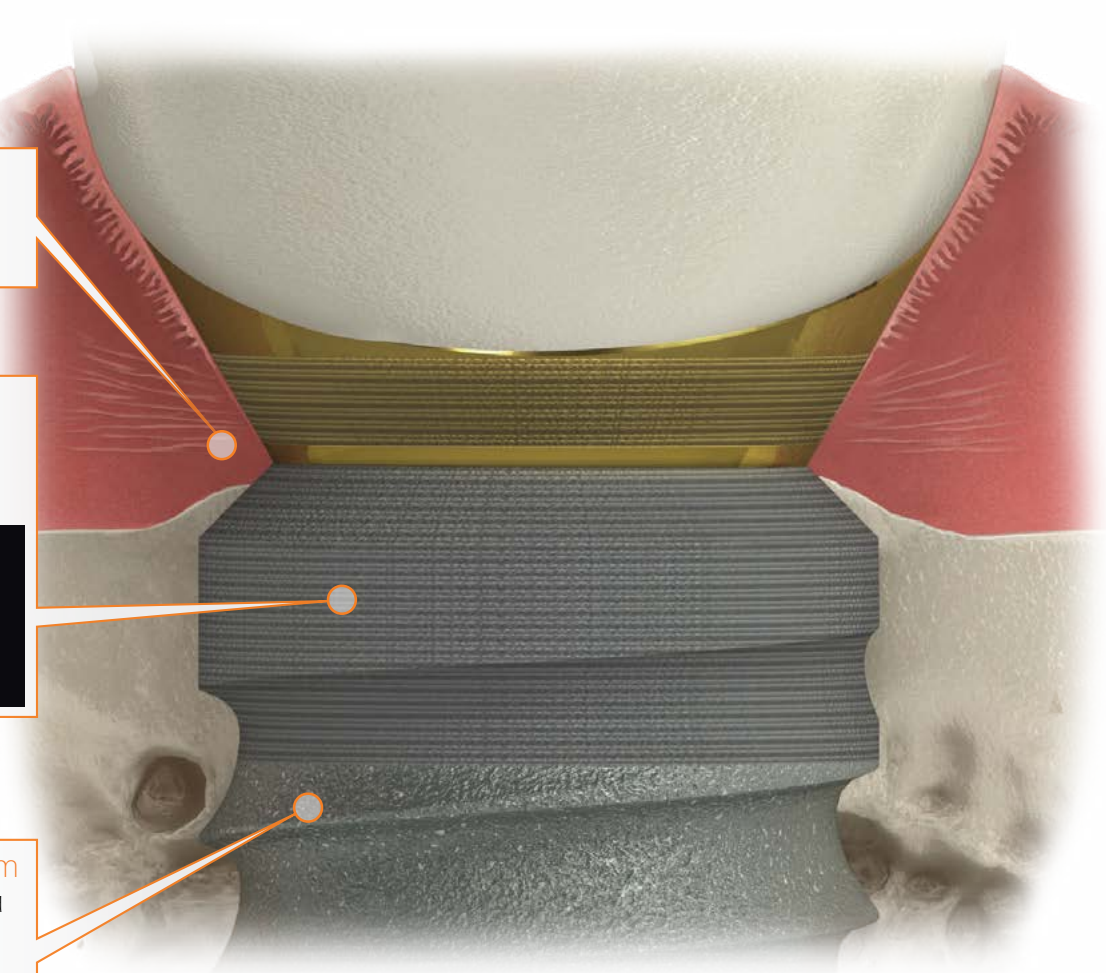
Laser-Lok® zone

creates a connective tissue seal and maintains crestal bone



optimized threadform

buttress thread engineered for superior stability over microthreaded implants



restorative choices

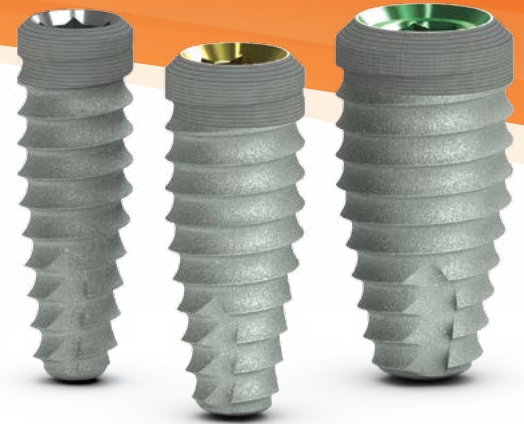
comprehensive line of internally hexed prosthetics for a wide variety of site conditions and restorative protocols



* Clinical and histologic images are courtesy of Myron Nevins, DDS and Craig Misch, DDS

product information & ordering







BioHorizons Tapered Plus implants incorporate the highly successful design features of the tapered implant line, offering excellent primary stability, surgical simplicity and tactile feedback. The platform switched Laser-Lok collar provides excellent bone maintenance and soft tissue volume, ideal for esthetically demanding cases.



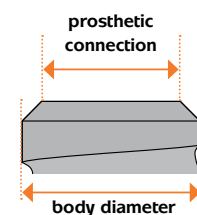
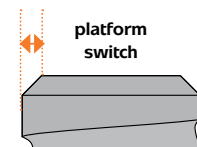
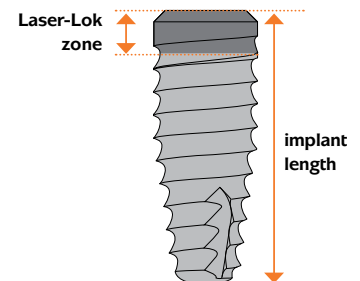
features:

- dual affinity Laser-Lok surface provides excellent bone maintenance and soft tissue attachment
- excellent primary stability from anatomically tapered body
- compressive bone loading from proprietary buttress threads
- conical internal hex connection provides a rigid connection and stable biological seal

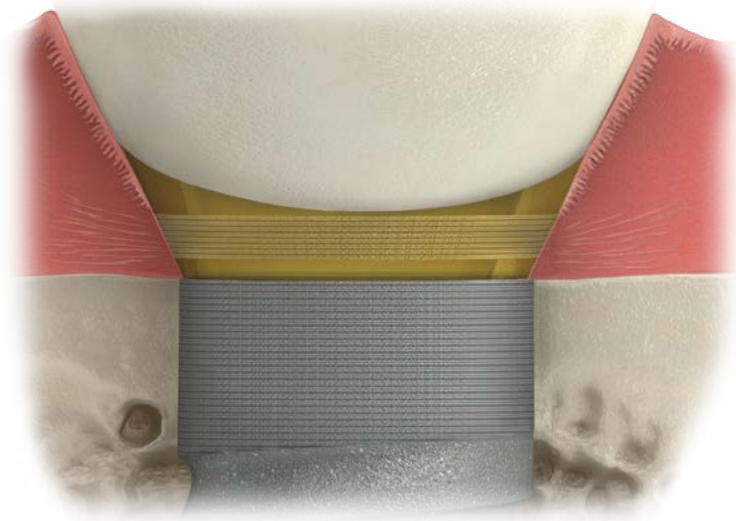
Tapered Plus Implants

			
body diameter	3.8mm	4.6mm	5.8mm
prosthetic connection	 3.0mm	 3.5mm	 4.5mm
Laser-Lok zone	1.8mm	1.8mm	1.8mm
apical diameter	2.8mm	3.1mm	3.9mm
platform switch	0.4mm	0.5mm	0.6mm
7.5mm length	—	TLXP4607	TLXP5807
9.0mm length	TLXP3809	TLXP4609	TLXP5809
10.5mm length	TLXP3810	TLXP4610	TLXP5810
12.0mm length	TLXP3812	TLXP4612	TLXP5812
15.0mm length	TLXP3815	TLXP4615	TLXP5815

Laser-Lok collar with Resorbable Blast Texturing (RBT) on implant body. Mount-free for quick placement and maximum site visibility. Comes packaged with a Cover Cap. Titanium Alloy (Ti-6Al-4V ELI).













tapered internal



BioHorizons flagship Tapered Internal implants are now available in 5 diameters and 6 lengths, including the new 3.4mm diameter and 18mm lengths. The dual affinity Laser-Lok surface offers flexible implant placement, providing excellent bone maintenance and a stable soft tissue seal. Aggressive buttress threads and anatomically tapered body provide compressive loading and excellent primary stability.


Mount-free Tapered Internal Implants

					
body diameter	3.0mm	3.4mm	3.8mm	4.6mm	5.8mm
prosthetic connection	 3.0mm	 3.0mm	 3.5mm	 4.5mm	 5.7mm
Laser-Lok zone	2.1mm	1.8mm	1.8mm	1.8mm	1.8mm
apical diameter	2.0mm	2.4mm	2.8mm	3.1mm	3.9mm
7.5mm length	—	—	—	TLX4607	TLX5807
9.0mm length	—	TLX3409	TLX3809	TLX4609	TLX5809
10.5mm length	TLX3010	TLX3410	TLX3810	TLX4610	TLX5810
12.0mm length	TLX3012	TLX3412	TLX3812	TLX4612	TLX5812
15.0mm length	TLX3015	TLX3415	TLX3815	TLX4615	TLX5815
18.0mm length	—	TLX3418	TLX3818	TLX4618	—

Expanded Laser-Lok zone with no smooth, machined area. Resorbable Blast Texturing (RBT) on implant body. Packaged mount-free for quick placement and maximum site visibility. Comes packaged with a Cover Cap. Titanium Alloy (Ti-6Al-4V ELI).

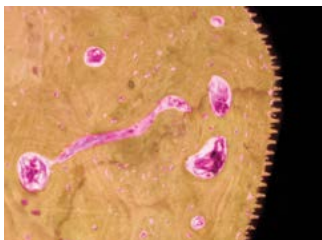
product information & ordering

Tapered Internal Implants with 3inOne abutment

			
body diameter	3.8mm	4.6mm	5.8mm
prosthetic connection	 3.5mm	 4.5mm	 5.7mm
Laser-Lok zone	1.5mm	1.5mm	1.5mm
apical diameter	2.8mm	3.1mm	3.9mm
7.5mm length	—	TLR4607	TLR5807
9.0mm length	TLR3809	TLR4609	TLR5809
10.5mm length	TLR3810	TLR4610	TLR5810
12.0mm length	TLR3812	TLR4612	TLR5812
15.0mm length	TLR3815	TLR4615	TLR5815





Laser-Lok collar with Resorbable Blast Texturing (RBT) on implant body. Comes packaged with a Cover Cap, Abutment Screw and pre-mounted 3inOne esthetic abutment that serves as a fixture mount, closed-tray transfer coping (when used with a ball-top screw) and final abutment. Titanium Alloy (Ti-6Al-4V ELI).

Laser-Lok surface technology across the entire implant body with no machined collar for faster osseointegration¹ and higher bone to implant contact. Ideal for anatomically challenging conditions. Comes packaged with a Cover Cap. Mount-free delivery. Titanium Alloy (Ti-6Al-4V ELI).

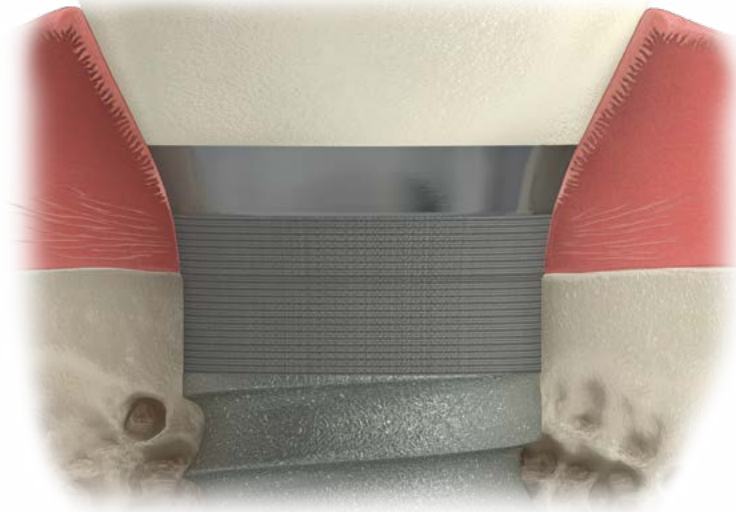


Histology of a buttress thread with Laser-Lok showing exceptional bone attachment.

Tapered Internal Implants with Laser-Lok Complete

		
body diameter	4.6mm	5.8mm
prosthetic connection	 4.5mm	 5.7mm
apical diameter	3.1mm	3.9mm
7.5mm length	TL4607	TL5807
9.0mm length	TL4609	TL5809

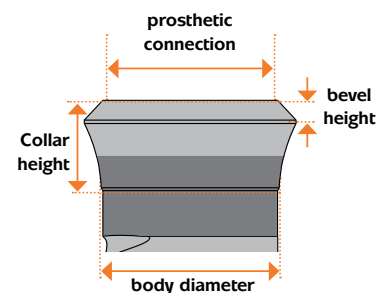
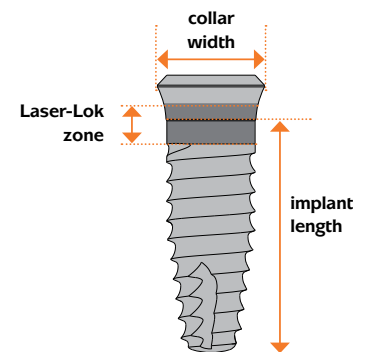
tapered tissue level



Tapered Tissue Level implants feature a trans mucosal collar for one stage procedures and Laser-Lok surface technology to inhibit epithelial downgrowth, attach connective tissue and create a biologic seal around the implant. Tapered Tissue Level implants are available in 4 diameters including the only 3mm tissue level implants currently available for tight spaces.[†]

Tapered Tissue Level Implants

body diameter	3.0mm	3.8mm	4.6mm	5.8mm
prosthetic connection	3.5mm	3.5mm	4.5mm	5.7mm
Laser-Lok zone	2.0mm	2.0mm	2.0mm	2.0mm
apical diameter	2.0mm	2.8mm	3.1mm	3.9mm
collar height	2.3mm	2.3mm	2.3mm	2.3mm
bevel height	0.5mm	0.5mm	0.5mm	0.5mm
max collar width	4.5mm	4.5mm	5.5mm	6.7mm
7.5mm length	—	TTLY3807	TTLG4607	TTLB5807
9.0mm length	—	TTLY3809	TTLG4609	TTLB5809
10.5mm length	TTLY3010	TTLY3810	TTLG4610	TTLB5810
12.0mm length	TTLY3012	TTLY3812	TTLG4612	TTLB5812



Laser-Lok collar with Resorbable Blast Texturing (RBT) on implant body.
 Packaged mount-free for quick placement and maximum site visibility.
 Comes packaged with a Cover Cap. Titanium Alloy (Ti-6Al-4V ELI).

[†] Based on research of competitive data. Thread major is 3.0mm.
 shop online at www.biohorizons.com

Tapered HD Surgical Kit

TSK4000

Tapered HD Surgical Kit

Includes the instrumentation required to place:

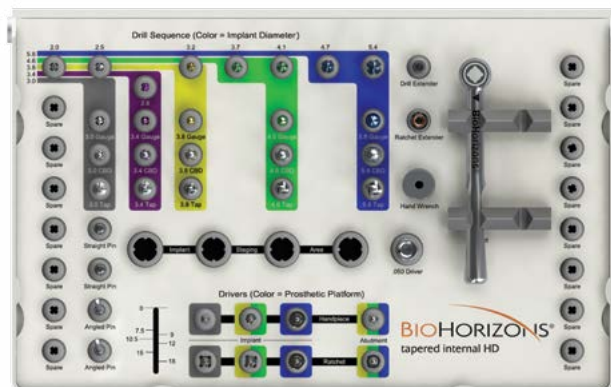
Tapered Plus, Tapered 3.0, Tapered Tissue Level, Laser-Lok 3.0 & Tapered Internal including the 3.4mm diameter and 18mm lengths.

TSK3500

Tapered HD Surgical Kit (without instruments)

features:

- versatile, removable, hinged lid
- 40% smaller and 40% lighter than other kits
- easy to disassemble and assemble during cleaning
- implant staging area for implant vials during surgery
- use to place Tapered Plus, Tapered Internal, Tapered Tissue Level, Tapered 3.0 and Laser-Lok 3.0
- empty spare slots for other instrumentation such as stop drills or extended shank drills



The surgical kit features an intuitive color-coded layout that guides the surgeon through the instrument sequence. The drilling section is color-coded by implant diameter. The implant driver section is color-coded by prosthetic connection.

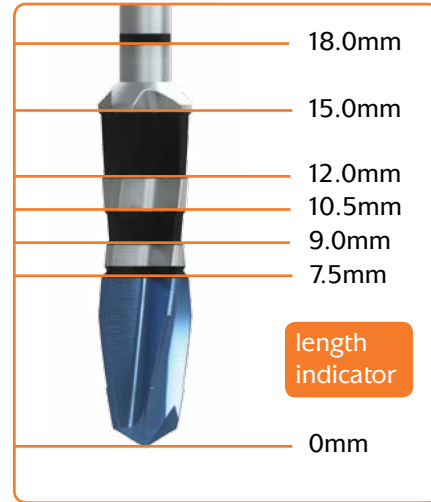
INDIVIDUAL KIT COMPONENTS

HD Drills

The Tapered HD drills feature highly efficient, fully anodized cutting flutes for crisp osteotomies in even the densest bone. The guaranteed corrosion-free surface is non-reflective under bright operatory lights. The simplified drill markings correspond to the six Tapered Internal family implant lengths. Drills should be replaced every 12-20 osteotomies for maximum cutting efficiency.

features:

- cutting flutes designed for maximum efficiency
- anodized drill tips for easy identification
- guaranteed corrosion-free
- non-reflective surface for high visibility
- simplified drill markings match each implant length
- compatible with Tapered Internal, Plus, 3.0 and Tissue Level
- creates 12-20 osteotomies depending on bone density
- recommended drill speed 1,500-2,000 rpm (2.0 & 2.5mm), 1,000 rpm (all others)



TSD2020HD	2.0mm HD Drill
TSD2025HD	2.5mm HD Drill
TSD2028HD	2.8mm HD Drill
TSD2032HD	3.2mm HD Drill
TSD2037HD	3.7mm HD Drill
TSD2041HD	4.1mm HD Drill
TSD2047HD	4.7mm HD Drill
TSD2054HD	5.4mm HD Drill

INDIVIDUAL KIT COMPONENTS

Other HD Instruments



- TDG2030HD** 3.0mm HD Depth Gauge
- TDG2034HD** 3.4mm HD Depth Gauge
- TDG2038HD** 3.8mm HD Depth Gauge
- TDG2046HD** 4.6mm HD Depth Gauge
- TDG2058HD** 5.8mm HD Depth Gauge



- TSC2030HD** 3.0mm HD Crestal Bone Drill
- TSC2034HD** 3.4mm HD Crestal Bone Drill
- TSC2038HD** 3.8mm HD Crestal Bone Drill
- TSC2046HD** 4.6mm HD Crestal Bone Drill
- TSC2058HD** 5.8mm HD Crestal Bone Drill



- TST2030HD** 3.0mm HD Bone Tap
- TST2034HD** 3.4mm HD Bone Tap
- TST2038HD** 3.8mm HD Bone Tap
- TST2046HD** 4.6mm HD Bone Tap
- TST2058HD** 5.8mm HD Bone Tap

Color coding of HD Instruments

Drills, taps and depth gauges are color coded by implant body diameter:

- 3.0mm body - no color indicator
- 3.4mm body - purple
- 3.8mm body - yellow
- 4.6mm body - green
- 5.8mm body - blue

INDIVIDUAL KIT COMPONENTS

Misc. Instruments



TP3IDHR 3.0 Implant-level Driver, Handpiece, Regular
TP3IDRR 3.0 Implant-level Driver, Ratchet, Regular



TYGIDH 3.5/4.5mm HD Implant-level Driver, Handpiece
TYGIDR 3.5/4.5mm HD Implant-level Driver, Ratchet



TBIDH 5.7mm HD Implant-level Driver, Handpiece
TBIDR 5.7mm HD Implant-level Driver, Ratchet



PHA Abutment-level Driver, Handpiece*
PRA Abutment-level Driver, Ratchet

Color coding of Drivers

Drivers are color coded by prosthetic connection:

- 3.0mm platform - no color indicator
- 3.5mm platform - yellow
- 4.5mm platform - green
- 5.7mm platform - blue



130-000
Ratchet



300-205
4mm Square Drive Extender



300-400
Hand Wrench



135-351
.050" (1.25mm)
Hex Driver



122-100
Drill Extender



144-100
Straight
Parallel Pins
(2 per kit)



144-200
20° Angled
Parallel Pins**
(2 per kit)

* An alternate abutment-level driver (PADHH) is available for W&H handpieces that feature the hexagon chucking system.

** A 30° parallel pin (144-300) can be ordered separately.

ANCILLARY INSTRUMENTS

2.5mm Tapered Depth Drills with stops



- TSD202507** 2.5mm Tapered Depth Drill, 7.5mm Stop
- TSD202509** 2.5mm Tapered Depth Drill, 9mm Stop
- TSD202510** 2.5mm Tapered Depth Drill, 10.5mm Stop
- TSD202512** 2.5mm Tapered Depth Drill, 12mm Stop
- TSD202515** 2.5mm Tapered Depth Drill, 15mm Stop

Stops are set to same length as each implant for crestal placement.
Laser-etched line set 1mm shorter for supracrestal placement.

Note: HD Depth Stop Drills available early 2016

Extended Shank HD Drills



- TSD4020HD** 2.0mm Extended Shank HD Drill
- TSD4025HD** 2.5mm Extended Shank HD Drill
- TSD4028HD** 2.8mm Extended Shank HD Drill
- TSD4032HD** 3.2mm Extended Shank HD Drill
- TSD4037HD** 3.7mm Extended Shank HD Drill
- TSD4041HD** 4.1mm Extended Shank HD Drill
- TSD4047HD** 4.7mm Extended Shank HD Drill
- TSD4054HD** 5.4mm Extended Shank HD Drill

Extended Shank Drills are 8mm longer than our standard drills.

Burs



- 122-110** 2.0mm Lindemann Bone Cutter

Side-cutting drill used to correct eccentric osteotomy preparations.

- 122-106** #6 Round Bur

Bone Profiling Burs



- TP3BP** 3.0mm Bone Profiling Bur & Guide
- PYBP** 3.5mm Bone Profiling Bur & Guide
- PGBP** 4.5mm Bone Profiling Bur & Guide
- PBBP** 5.7mm Bone Profiling Bur & Guide

Use at implant uncover to remove excess crestal bone for proper abutment seating.
Screw the guide into the implant and align the profiling bur for precise bone removal.
Match profiler & guide color to prosthetic connection.

ANCILLARY INSTRUMENTS

Tissue Punches



- 122-200** 3.0mm Tissue Punch (for a 3.3mm incision)
- PYTP** 3.5mm Tissue Punch (for a 3.9mm incision)
- PGTP** 4.5mm Tissue Punch (for a 4.7mm incision)
- PBTP** 5.7mm Tissue Punch (for a 6.1mm incision)

Use in flapless surgical procedures to remove a minimal amount of the soft tissue from the crest of the ridge prior to osteotomy preparation or during implant uncoverly.

Handpiece Hex Drivers



- 134-350** .050" (1.25mm) Handpiece Hex Driver
- 134-450** .050" (1.25mm) Handpiece Hex Driver, Long

For installation and removal of cover screws, healing abutments and abutment screws. The handpiece hex drivers are used with latch-type contra-angle handpieces. The Handpiece Hex Driver, Long (134-450) is 5mm longer than the standard version (134-350).

Adjustable Torque Wrenches



EL-C12374 Elos Adjustable Torque Wrench

Lightweight titanium design is easy to use as a ratchet or adjustable torque wrench with visual indicators for 15, 30, 40, 50, 60, 70, 80 and 90 Ncm. Comes packaged with a 4mm square adaptor. Quickly disassembles for cleaning. No calibration required.

EL-C8521 Elos Replacement Bit, 4mm Square Adaptor

EL-C8381 Elos Replacement Bit, Handpiece



ATW ITL Precise Adjustable Torque Wrench

Place both implants and abutments with 9 distinct torque settings (15, 20, 25, 30, 35, 40, 45, 50 and 60 Ncm). A simple twist of the handle locks in precision-engineered torque values and guarantees accuracy and repeatability. Fits any 4mm square component.

Surgical Driver



150-000 Surgical Driver

Use to drive implants into the osteotomy, particularly in the anterior region. Holds the 4mm Square implant-level drivers and the bone taps.

Implant Spacer / Depth Probe



144-300 Implant Spacer / Depth Probe

Use to provide intraoral measurements. Multi-functional tool for marking implant spacing on the ridge and probing osteotomy depth.

ANCILLARY KITS

Guided Surgery Kit

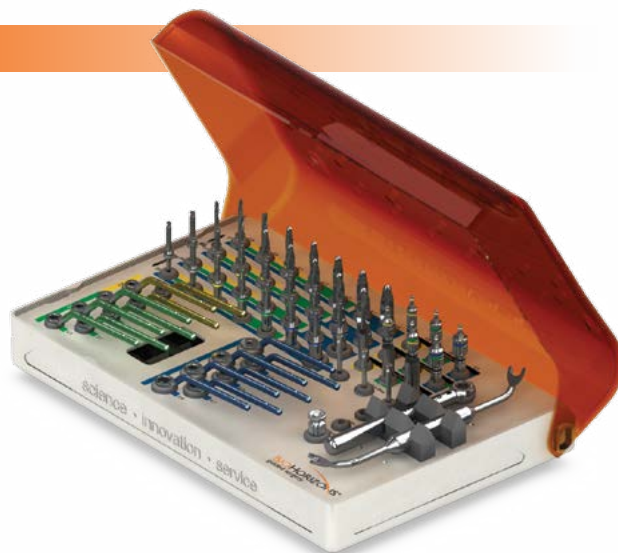
CGS3000

Guided Surgery Kit (with instruments)

Includes the instrumentation required to place BioHorizons Tapered implants*

Important Note about Guided Surgery Kit

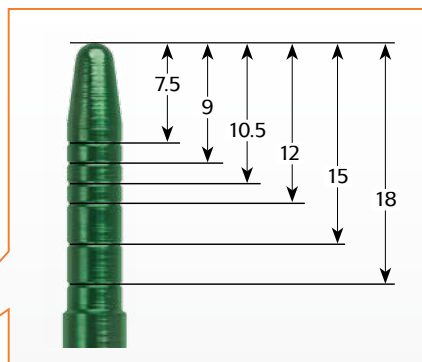
Surgical protocol & guide partners for the CGS3000 can be found at www.biohorizons.com.



Tapered Offset Dilator Kit

TODKIT Tapered Offset Site Dilator Kit

The Tapered Implant site dilators match the geometry of the Tapered surgical drills and are used to create or enlarge osteotomies in soft maxillary bone. These instruments compress the bone laterally rather than removing valuable bone from the surgical site, creating a more dense bone-to-implant interface.



* Mount-free Tapered Internal, Tapered Plus, Tapered 3.0, Tapered Tissue Level

HEALING ABUTMENTS & COVER CAPS

Laser-Lok Healing Abutments



Use Laser-Lok healing abutments when a Laser-Lok abutment restoration is planned to inhibit epithelial downgrowth, establish a soft tissue seal and protect the bone. Refer to the Prosthetic Technique Manual (L02015) for appropriate handling techniques.

- Y = Yellow (3.5mm) platform
- G = Green (4.5mm) platform
- B = Blue (5.7mm) platform
- N, R or W = Narrow, Regular or Wide emergence
- 3 or 5 = 3mm or 5mm abutment height
- L = Laser-Lok

3.0 healing abutments are not laser marked due to their small size.

	abutment diameter	3mm height	5mm height
Narrow Emergence			
3.5mm platform, Laser-Lok	4.0mm	PYNHA3L	PYNHA5L
4.5mm platform, Laser-Lok	5.0mm	PGNHA3L	PGNHA5L
5.7mm platform, Laser-Lok	6.0mm	PBNHA3L	PBNHA5L
Regular Emergence			
3.0mm platform, Laser-Lok	3.5mm	TP3HA3L	TP3HA5L
3.5mm platform, Laser-Lok	4.5mm	PYRHA3L	PYRHA5L
4.5mm platform, Laser-Lok	5.5mm	PGRHA3L	PGRHA5L
5.7mm platform, Laser-Lok	6.5mm	PBRHA3L	PBRHA5L
Wide Emergence			
3.0mm platform, Laser-Lok	4.0mm	TP3WHA3L	TP3WHA5L
3.5mm platform, Laser-Lok	6.0mm	PYWHA3L	PYWHA5L
4.5mm platform, Laser-Lok	7.0mm	PGWHA3L	PGWHA5L

Cover Caps

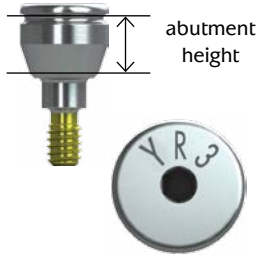


- TP3CC** 3.0mm Cover Cap
- PYCC** 3.5mm Cover Cap
- PGCC** 4.5mm Cover Cap
- PBCC** 5.7mm Cover Cap

Use during submerged surgical healing. Hand-tighten with the .050" (1.25mm) Hex Driver. Titanium Alloy. Included with implant but can also be ordered separately.

HEALING ABUTMENTS

Standard Healing Abutments



Hand-tighten with the .050" (1.25mm) Hex Driver. Titanium Alloy.

The 3.5, and 4.5mm healing abutments are laser marked for easy intraoral identification of the prosthetic platform, emergence and height:

- Y = Yellow (3.5mm) platform
- G = Green (4.5mm) platform
- B = Blue (5.7mm) platform
- N, R or W = Narrow, Regular or Wide emergence
- 1, 3 or 5 = 1mm, 3mm or 5mm abutment height

3.0 healing abutments are not laser marked due to their small size.

	abutment diameter	1mm height	3mm height	5mm height
Narrow Emergence				
3.5mm platform	4.0mm	PYNHA1	PYNHA3	PYNHA5
4.5mm platform	5.0mm	PGNHA1	PGNHA3	PGNHA5
5.7mm platform	6.0mm	PBNHA1	PBNHA3	PBNHA5
Regular Emergence				
3.0mm platform	3.5mm	-	TP3HA3	TP3HA5
3.5mm platform	4.5mm	-	PYRHA3	PYRHA5
4.5mm platform	5.5mm	-	PGRHA3	PGRHA5
5.7mm platform	6.5mm	-	PBRHA3	PBRHA5
Wide Emergence				
3.0mm platform	4.0mm	-	TP3WHA3	TP3WHA5
3.5mm platform	6.0mm	-	PYWHA3	PYWHA5
4.5mm platform	7.0mm	-	PGWHA3	PGWHA5

Healing Abutments (Tapered Tissue Level)

	abutment diameter	2mm height	3mm height	4mm height
3.5mm platform	5.0mm	SYHA20	SYHA30	SYHA40
4.5mm platform	6.0mm	SGHA20	SGHA30	SGHA40
5.7mm platform	7.5mm	SBHA20	SBHA30	SBHA40



For Tapered Tissue Level implants only. Hand-tighten with the .050" (1.25mm) Hex Driver. Titanium Alloy. Laser marked for easy intraoral identification; for example: **SG2**: Green (4.5mm) platform / 2mm height.

TEMPORARY ABUTMENTS



Using authentic BioHorizons parts will ensure a precision fit connection between the prosthetic component and implant, avoiding costly component failures that may occur from using third-party prosthetics. Authentic BioHorizons parts are color-coded for easy identification to match the mating implant.

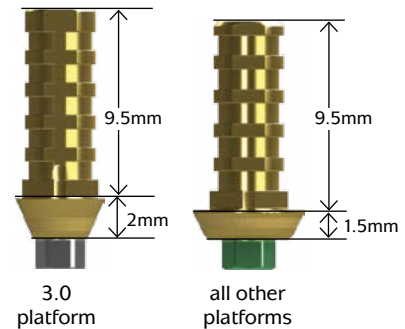
advantages:

- lifetime warranty on all implants and prosthetics
- Spiralock® technology minimizes screw loosening
- precise mating geometries reduce prosthetic failures
- advanced design creates a better engineered connection
- color-coded prosthetic components match implant platforms

Laser-Lok Easy Ti Temp Abutments

TP3ETHL	3.0mm platform, hexed	TP3ETNL	3.0mm platform, non-hexed
PYETHL	3.5mm platform, hexed	PYETNL	3.5mm platform, non-hexed
PGETHL	4.5mm platform, hexed	PGETNL	4.5mm platform, non-hexed
PBETHL	5.7mm platform, hexed	PBETNL	5.7mm platform, non-hexed

Use hexed for single-unit screw retained, long term temporary restorations that require superior esthetics (>30 days). Use non-hexed for multiple-unit, screw retained, long term temporary restorations (>30 days). Packaged with an abutment screw (PXAS). Titanium Alloy for strength. TiN coated for esthetics. Final torque: 30Ncm. Refer to the Prosthetic Technique Manual (L02015) for appropriate handling techniques



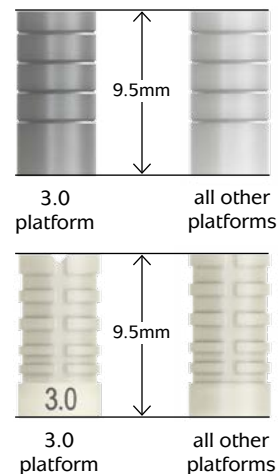
Laser-Lok Easy Ti Temp Sleeves

TP3ETS	3.0mm platform (pack of 3)
PXETS	3.5mm, 4.5mm & 5.7mm platform (pack of 3)

Use to create a wax-up of abutment for Easy Ti Temp Abutments. Packaged in packs of three. Acetal resin (Delrin® or Pomalux®) sleeve.

TP3ETPS	3.0mm platform (pack of 3), PEEK
PXETPS	3.5mm, 4.5mm & 5.7mm platform (pack of 3), PEEK

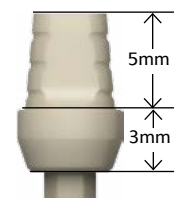
Use for fabrication of cement- or screw-retained provisional restorations (>30 days). Packaged in packs of three. PEEK (PolyEtherEtherKetone) material.



PEEK Temporary Abutments (Regular Emergence)

TP3TA	3.0mm platform
PYRTA	3.5mm platform
PGRTA	4.5mm platform
PBRTA	5.7mm platform

Use for fabrication of cement- or screw-retained provisional restorations (up to 30 days). A direct coping screw (PXDCS, purchased separately) may be used to maintain screw access hole during fabrication of screw-retained provisional prostheses. Packaged with an abutment screw (PXAS). PEEK (PolyEtherEtherKetone) material. Final torque: 30Ncm.



INSTRUCTIONS FOR USE



This surgical manual serves as a reference for using the Tapered Internal, Tapered Plus and Tapered Tissue Level implants and surgical instruments. It is intended solely to provide instructions on the use of BioHorizons products. It is not intended to describe the methods or procedures for diagnosis, treatment planning, or placement of implants, nor does it replace clinical training or a clinician's best judgment regarding the needs of each patient. BioHorizons strongly recommends appropriate training as a prerequisite for the placement of implants and associated treatment.

The procedures illustrated and described within this manual reflect idealized patient presentations with adequate bone and soft tissue to accommodate implant placement. No attempt has been made to cover the wide range of actual patient conditions that may adversely affect surgical and prosthetic outcomes. **Clinician judgment as related to any specific case must always supersede any recommendations made in this or any BioHorizons literature.**

Before beginning any implant surgical procedure with BioHorizons implants:



- Read and understand the Instructions for Use that accompany the products.
- Clean and sterilize the surgical tray and instruments per Instructions for Use.
- Become thoroughly familiar with all instruments and their uses.
- Study surgical kit layout and iconography.
- Design a surgical treatment plan to satisfy the prosthetic requirements of the case.



Small diameter implants are intended for the anterior region of the mouth and are not intended for the posterior region of the mouth due to possible failure of the implant.

Indications

Tapered Internal, Tapered Plus and Tapered Tissue Level Implants are intended for use in the mandible or maxilla as an artificial root structure for single tooth replacement or for fixed bridgework and dental retention. The implants may be restored immediately:

- 1) with a temporary prosthesis that is not in functional occlusion or
- 2) when splinted together for multiple tooth replacement or when stabilized with an overdenture supported by multiple implants.

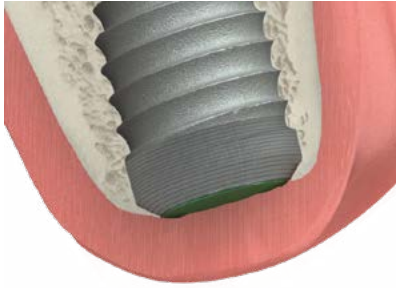
Tapered Internal 3.0 and Tapered Tissue Level 3.0 Implants may be used as an artificial root structure for single tooth replacement of mandibular central and lateral incisors and maxillary lateral incisors. The implants may be restored immediately:

- (1) with a temporary prosthesis that is not in functional occlusion,
- (2) when splinted together as an artificial root structure for multiple tooth replacement of mandibular incisors,
- (3) for denture stabilization using multiple implants in the anterior mandible and maxilla.

The implants may be placed in immediate function when good primary stability has been achieved and with appropriate occlusal loading.

SURGICAL PROTOCOLS

Two-Stage Protocol



Implant with cover cap in a two-stage protocol.

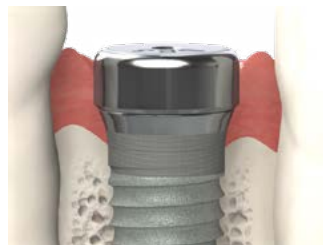
In a two-stage surgery, the implant is placed below the soft tissue and protected from occlusal function and other forces during osseointegration. A low-profile cover cap is placed on the implant to protect it from the ingress of soft tissue.

Following osseointegration, a second procedure exposes the implant and a transmucosal healing abutment is placed to allow for soft tissue healing and development of a sulcus. Prosthetic restoration begins after soft tissue healing.

Single-Stage Protocol



Tapered Plus with healing abutment in a single-stage protocol.



Tapered Tissue Level with healing abutment in a single-stage protocol.

Single-stage surgery may be accomplished by placing a healing abutment at the time of implant surgery. This eliminates the need for a second procedure. Although the implant is not in occlusal function, some forces can be transmitted to it through the exposed transmucosal element.

Prosthetic restoration begins following osseointegration of the implant and soft tissue healing.

Non-functional Immediate Restoration



Implant restored with a non-functional provisional prosthesis.

Single-stage surgery with non-functional immediate provisionalization provides the patient a non-functioning provisional prosthesis early in the treatment plan. An abutment is placed on the implant at or shortly after surgery, and a provisional restoration is secured using temporary cement. The provisional can help contour the soft tissue profile during healing.

Immediate Function Restoration

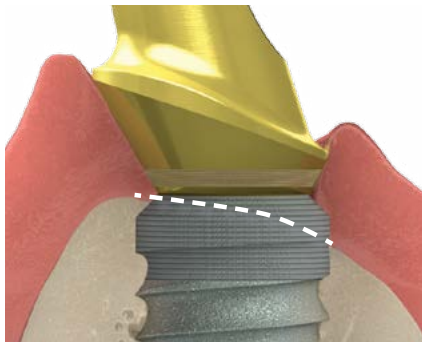


Implants with a splinted prosthesis in immediate function.

Single-stage surgery with immediate function is possible in good quality bone where multiple implants exhibiting excellent initial stability can be splinted together. Splinting implants together may offer a biomechanical advantage over individual, unsplinted prostheses.

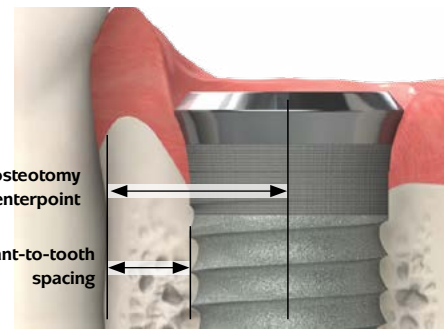
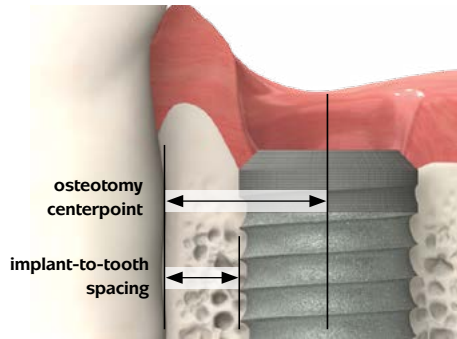
IMPLANT PLACEMENT LEVEL & SPACING

Placement in Uneven Ridges



When placing the implant in an uneven ridge, prepare the osteotomy and place the implant so the bone/soft-tissue junction is within the Laser-Lok transition zone. This will allow both soft tissue and bone to attach to the Laser-Lok collar. If the ridge discrepancy is more than the Laser-Lok transition zone, leveling the ridge can be considered.

Implant-to-Tooth Spacing

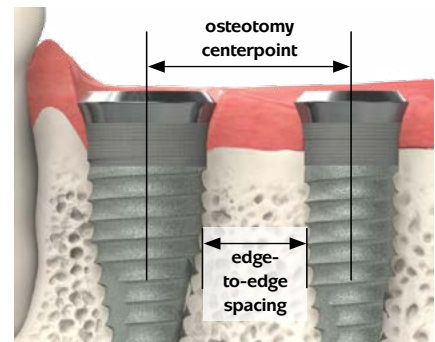
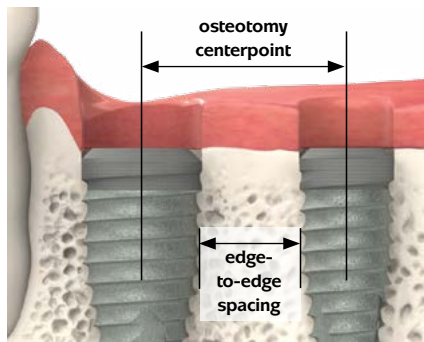


The osteotomy centerpoint required to maintain a specific implant-to-tooth spacing is calculated according to this formula:
 $1/2$ (implant body diameter) + the desired spacing.



During implant placement, clinicians must apply their best judgment as to the appropriate spacing for individual patient conditions.

Implant-to-Implant Spacing



The osteotomy center-to-center measurement required to maintain a specific edge-to-edge spacing between two implants is calculated according to this formula: **$1/2$ (sum of 2 implant body diameters) + the desired spacing.**

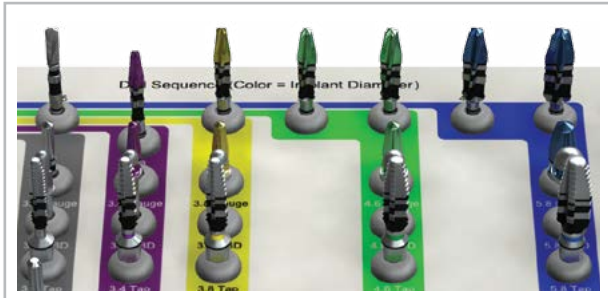


During implant placement, clinicians must apply their best judgment as to the appropriate spacing for individual patient conditions.

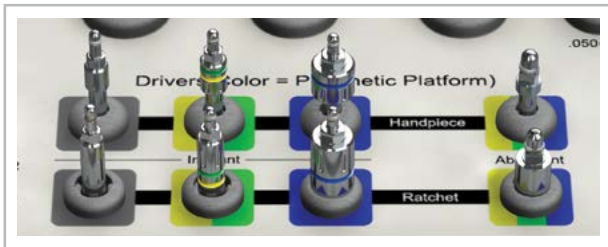
SURGICAL KIT & DRILL SEQUENCE

Surgical Kit Instructions

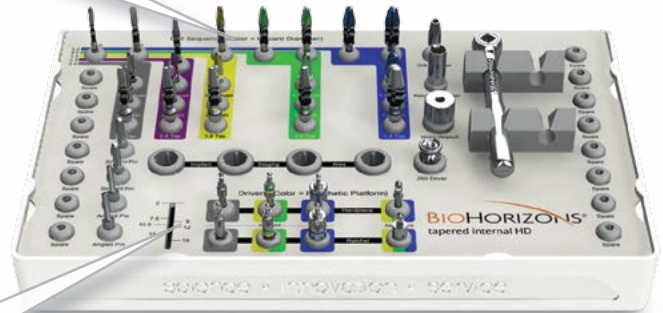
The surgical kit uses an intuitive layout to guide the surgeon through the instrument sequence. The sequence begins in the upper left hand corner and works left-to-right and then down.



The drilling section is color-coded by implant body diameter (gray=3.0mm, purple=3.4mm, yellow=3.8mm, green=4.6mm and blue=5.8mm).



The implant driver section is color-coded by prosthetic platform (gray=3.0mm, yellow=3.5mm, green=4.5mm and blue=5.7mm).



abutment-level drivers are only for mounted implants.

Prior to use, clean and sterilize the surgical tray and instruments according to the Instructions for Use included with the kit. Study the surgical kit layout, color-coding and iconography. Surgical assistants should be thoroughly familiar with all instruments and their uses prior to initiating the surgical procedure.

Drill Sequence

<p>3.0mm body diameter</p> <p>3.4mm body diameter</p> <p>3.8mm body diameter</p> <p>4.6mm body diameter</p> <p>5.8mm body diameter</p>					
<p>HD Drill Sequence</p>		<p>HD Depth Gauge</p>	<p>HD Crestal Bone Drill (site specific)</p>	<p>HD Bone Tap (site specific)</p>	<p>Implant Driver</p>
<p>Recommended speed 1,500 - 2,000 RPM</p>	<p>Recommended speed 1,000 RPM</p>		<p>Recommended speed 1,000 RPM</p>	<p>Maximum 30 RPM or use manually</p>	<p>Maximum 30 RPM or use manually</p>

Note: The 2.8mm drill is used for the 3.4mm diameter implant, it is not needed for other sizes.

DRILL OVERVIEW

Drill Markings

All surgical drills included with this system are externally irrigated and designed to be used with steady sterile irrigation. Reduced drill speed may be indicated in softer bone or as drill diameter increases.



Note: The depth marks are consistent throughout the starter drills, depth drills and width increasing drills

Important Considerations

- Peri-operative oral rinses with a 0.12% Chlorhexidine Digluconate solution have been shown to significantly lower the incidence of post-implantation infectious complications.² A pre-operative 30-second rinse is recommended, followed by twice daily rinses for two weeks following surgery.
- Drilling must be done under a constant stream of sterile irrigation. A pumping motion should be employed to prevent overheating the bone. Surgical drills and taps should be replaced when they are worn, dull, corroded or in any way compromised. BioHorizons recommends replacing drills after 12 to 20 osteotomies.³ A Drill-usage Tracking Chart is available at biohorizons.com to record this important information.
- There is a risk of injury to the mandibular nerve associated with surgical drilling in posterior mandibular regions. To minimize the risk of nerve injury, it is imperative that the clinician understands the drill depth markings as they relate to the implant length to produce the desired vertical placement of the implant.

OSTEOTOMY INITIALIZATION

2.0mm HD Drill



2.0mm Starter Drill

Purpose: Initiate osteotomy.

- Chisel-tip design eliminates "skating" on osseous crest
- Prepares site for paralleling pins
- Matte finish for increased visibility under operatory lights
- 1,500 - 2,000 RPM

2.5mm HD Drill



2.5mm Depth Drill

Purpose: Set osteotomy depth.

- Efficient cutting drill design collects bone for autografting
- Matte finish for increased visibility under operatory lights
- Final drill for 3.0mm implants
- 1,500 - 2,000 RPM



The 2.0mm and 2.5mm depth drills are designed to increase and/or set the depth of the osteotomy.

2.5mm Depth Drills with Stops



Purpose: Set osteotomy depth when access or visibility is poor.

- Fixed circular ring acts as a definitive drill stop
- One drill length for each implant length
- 1mm laser-etched line guides supracrestal implant placement
- Surgical Kit includes spare slots for depth drills with stops or extended shank drills
- Optional final drill for 3.0mm implants
- 1,500 - 2,000 RPM



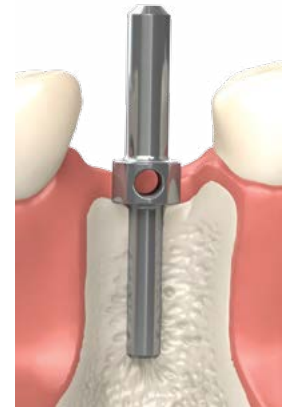
OSTEOTOMY MODIFICATION

Paralleling Pins



Purpose: Evaluate osteotomy position and angle.

- Provided straight or with a 20° angle
- Use after 2.0mm Starter Drill and 2.5mm Depth Drill
- 9mm shank for radiographic evaluation of proximity to adjacent anatomy
- Hub diameter is 4.0mm



HD Drills



Purpose: Incrementally widen the osteotomy to reduce heat generation.

- Depth-marked for reference
- Efficient cutting drill design collects bone for autografting
- The drill tip has limited end cutting. However, the osteotomy depth can be increased with these drills as needed
- Matte finish for increased visibility under operatory lights
- Color-coded by implant body diameter (gray=3.0mm, purple=3.4mm, yellow=3.8mm, green=4.6mm and blue=5.8mm)
- 1,000 RPM

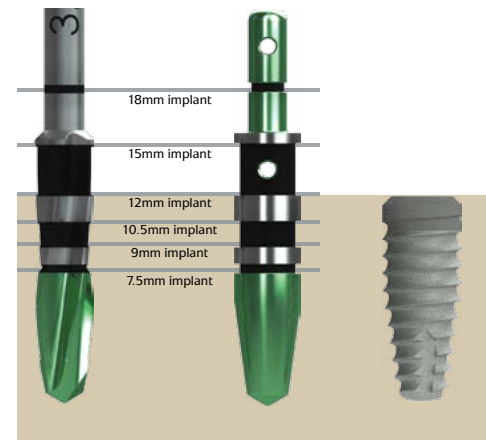


HD Depth Gauges



Purpose: To visualize final osteotomy diameter and location.

- Depth-marked for reference
- Use following the final width increasing drill for each implant
- Place the depth gauge into the osteotomy site, adjust osteotomy depth as necessary
- Can also be used after 2mm drill by inverting
- Color-coded by implant body diameter (gray=3.0mm, purple=3.4mm, yellow=3.8mm, green=4.6mm and blue=5.8mm)



HD drill

HD Depth gauge

12mm implant with Laser-Lok

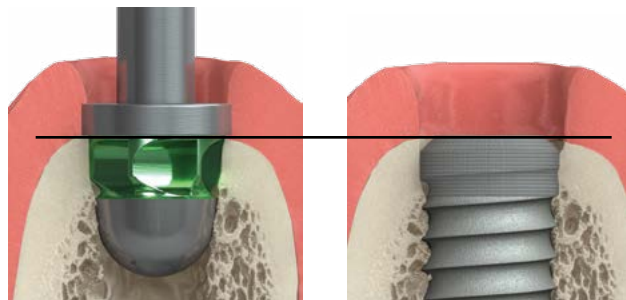
FINAL BONE PREPARATION & DRIVERS

HD Crestal Bone Drills



Purpose: Remove cortical bone at ridge crest for pressure-free seating of the implant collar.

- Use when dense cortical bone is present at crest
- Rounded non-end cutting hub centers drill in osteotomy
- Use following the final width increasing drill for each implant
- Color-coded by implant body diameter (gray=3.0mm, purple=3.4mm, yellow=3.8mm, green=4.6mm and blue=5.8mm)
- 1,000 RPM



Seat drill to the first line.

Implant level with osseous crest.

HD Bone Taps

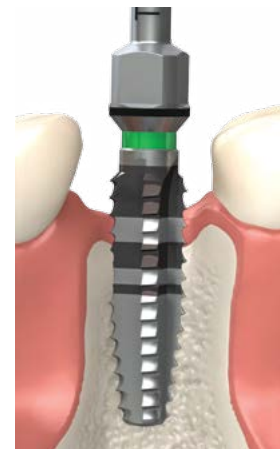


Purpose: Prepare dense cortical bone for implant threads.

- Site specific
- Final instrument prior to implant placement
- Can be driven with a handpiece, ratchet or hand wrench
- Color-coded by implant body diameter (gray=3.0mm, purple=3.4mm, yellow=3.8mm, green=4.6mm and blue=5.8mm)
- 30 rpm or less⁴

Place into the osteotomy, apply firm apical pressure and rotate slowly in a clockwise direction. When the threads engage, allow the tap to feed without excessive pressure. To remove, rotate the bone tap in a counter-clockwise direction, allowing it to back out of the osteotomy.

Do not pull on the bone tap to remove it from the site.



Implant & Abutment Drivers



Purpose: Engage the implant's internal hex/abutment internal square to drive implants into the osteotomy

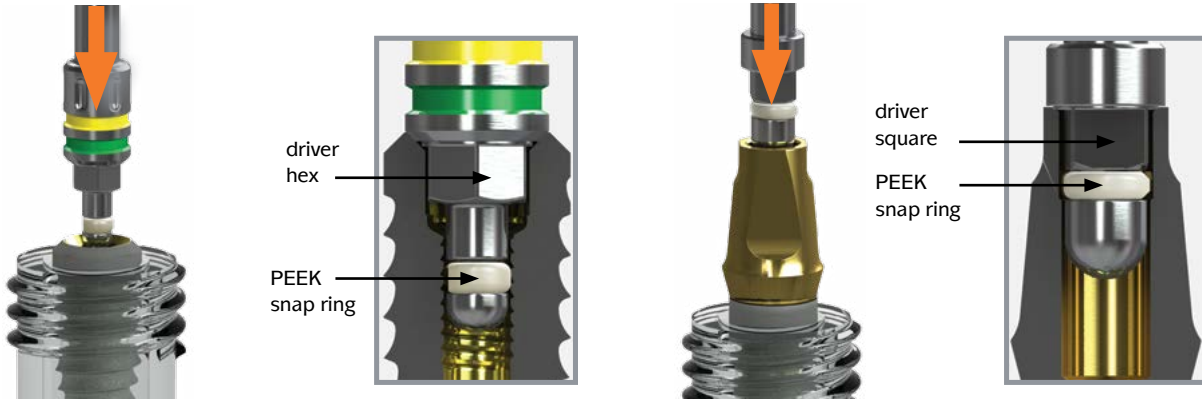
- Implant level drivers are color coded by prosthetic connection:
- gray=3.0mm platform
- yellow/green=3.5/4.5mm platform
- blue=5.7mm platform
- 30 rpm or less⁴



IMPLANT TRANSFER

Implant Pick-up

Vial caps are color coded by body diameter (3.0mm=white, 3.4mm=purple, 3.8mm=yellow, 4.6mm=green, 5.8mm=blue). Cover caps and implant drivers are color coded by prosthetic platform (3.0mm=gray, 3.5mm=yellow, 4.5mm=green, 5.7mm=blue).



Mount-free implants

To pick-up the implant, align the driver hex with the implant hex and press firmly to engage the PEEK snap ring.

Mounted implants

To pick-up the implant, engage the 3inOne Abutment or Implant with the PEEK snap ring of the appropriate abutment-level driver. The driver square has no retentive feature and does not need to be engaged. The driver will completely engage when the driver/implant is slowly rotated into the osteotomy under apical pressure.

Implant Placement

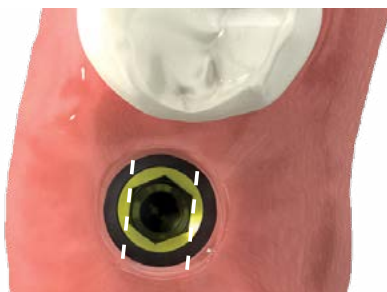


Place the apex of the implant into the osteotomy and begin rotating slowly. The driver hex will engage when the driver is slowly rotated under apical pressure. If too much resistance is felt during insertion, remove the implant and revise the osteotomy with the appropriate crestal bone drill or bone tap as deemed necessary to reduce insertion torque.

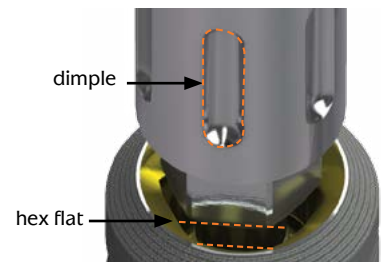


⚠ When placing mounted implants, do not exceed 120 Ncm of torque. If torque limit is met prior to full placement, remove the 3inOne abutment and complete placement using an implant-level driver.

Internal Hex Orientation



When seating the implant, use the corresponding dimples on the driver to orient one internal hex flat perpendicular to the implant angulation plane. Doing so verifies that an angled abutment will correct the angulation.



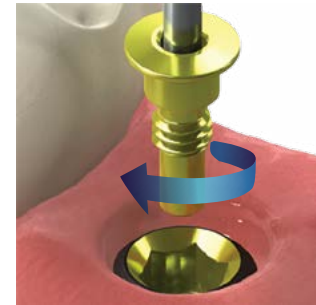
HEALING PROTOCOLS

Cover Caps for Two-stage Protocol



Purpose: Protects prosthetic platform in two-stage (submerged) surgical protocol for bone level implants.

- Irrigate implant to remove blood and other debris:
- Use an antibacterial paste to decrease the risk of bacterial growth
- Thread clockwise into implant body
- Color-coded by prosthetic platform
- Hand-tighten (10-15 Ncm) utilizing .050" (1.25mm) Hex Driver



cover cap

The cover cap for the mount-free implant is mounted in the vial cap.



implant

cover cap

The cover cap for the mounted implant is mounted on a plastic base underneath the implant.

Healing Abutments for Single-stage Protocol



Purpose: Transmucosal element for developing soft tissue emergence with narrow, regular, wide emergence or Simple Solutions prosthetic components.

- Color-coded by prosthetic platform
- The 3.5, 4.5mm and 5.7mm healing abutments are laser marked for easy intraoral identification; for example: YR3=Yellow (3.5mm) platform / Regular Emergence / 3mm High
- If a Laser-Lok temporary or final restoration is planned, a Laser-Lok healing abutment is required
- Hand-tighten (10-15 Ncm) utilizing .050" (1.25mm) Hex Driver



Immediate Provisional Restorative Options



Temporary Abutments

Purpose: Titanium and PEEK temporaries are easily modified for fabrication of cement or screw-retained provisional restorations. A long direct coping screw (purchased separately) may be used to maintain the screw access hole during the fabrication of a screw-retained provisional prosthesis.



Simple Solutions with Laser-Lok

Purpose: When a Simple Solutions restoration is planned, the tooth-colored healing cap that comes packaged with the abutment may be used as a coping for an immediate provisional restoration. See L01017 or L02007 for more information.

Bone Profilers



Purpose: In cases where excess crestal bone has been created, use a bone profiler at implant uncover to contour the bone. This will provide the necessary clearance for proper abutment seating.

- Profiler guide protects implant platform
- Color-coded by prosthetic platform (gray=3.0mm, yellow=3.5mm, green=4.5mm, blue=5.7mm)
- 850-2,500 rpm drill speed with steady sterile irrigation

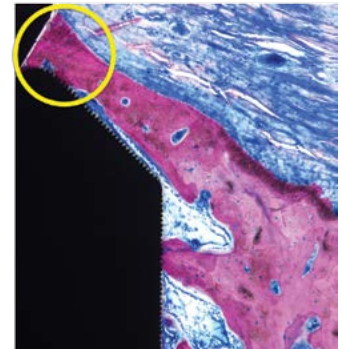
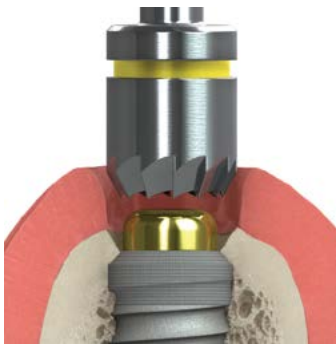


Image showing exceptional bone growth at 3 months. (Myron Nevins, DDS.)



Do not use the profiler without the guide in place.

Using an .050" hex driver, remove the surgical cover cap from the implant and place the profiler guide that matches the color of the prosthetic platform. Use the profiler with copious amounts of sterile irrigation. Once the excess bone and soft tissue are removed, unscrew the guide and seat the appropriate prosthetic component.

Post-operative Instructions

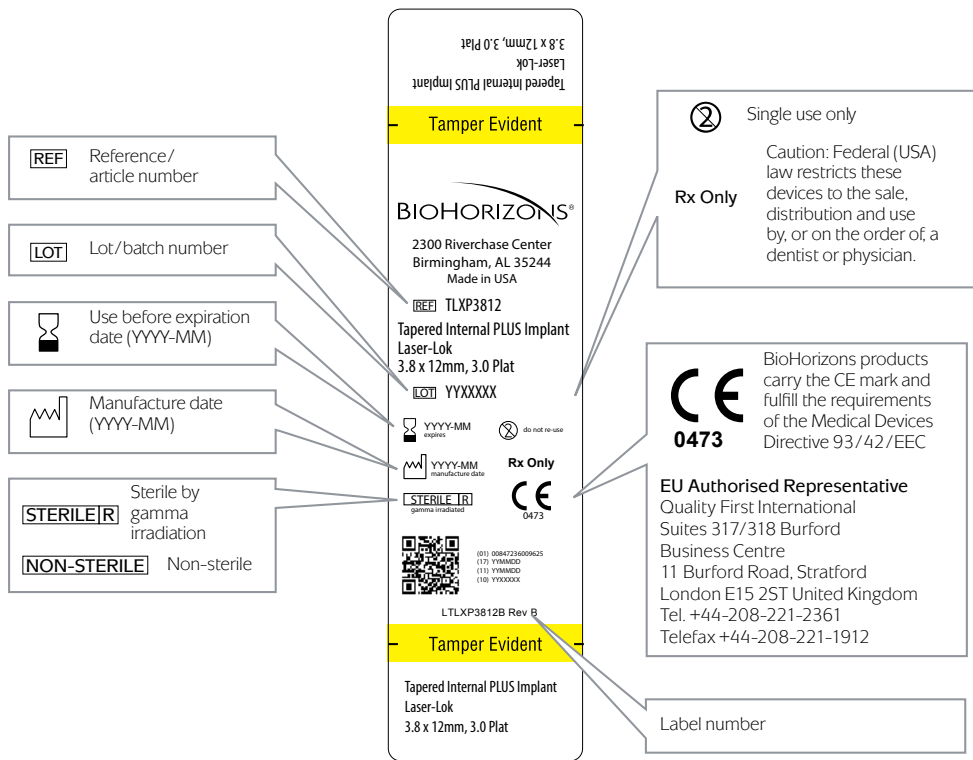
A period of unloaded healing time is often recommended to allow for integration between the bone and implant surface. This is dependent on individual patient healing rates and bone quality of the implant site. Each case must be independently evaluated.

The patient should be instructed to follow a post-surgical regimen including cold packs for 24 hours post-implantation. The patient's diet should consist of soft foods and possibly dietary supplements. Pharmacological therapy should be considered as the patient's condition dictates.

If a removable prosthesis is used during the initial healing phase, a soft liner material should be used to prevent pressure on the surgical site. Relieve the prosthesis over the implant site prior to the soft liner application. Periodically check the patient's soft tissue and bone healing using clinical and radiographic evaluations.

Ongoing hygiene for the implant patient is vital. Hygiene recall appointments at three month intervals are suggested. Instruments designed for implant abutment scaling, such as Implacare® instruments from Hu-Friedy® should be utilized. The stainless steel handles may be fitted with assorted tip designs for hygiene on natural teeth. The Implacare® scalers contain no glass or graphite fillers that can scratch titanium implant abutments.

Symbol Descriptions for Product Labeling



Tapered Plus Product Labeling



body diameter	prosthetic platform
3.8mm (yellow box label, vial cap & white blister label)	3.0mm (gray internal hex & cover cap)
4.6mm (green box label, vial cap & white blister label)	3.5mm (yellow internal hex & cover cap)
5.8mm (blue box label, vial cap & white blister label)	4.5mm (green internal hex & cover cap)

Tapered Internal Product Labeling



body diameter	prosthetic platform
3.0mm (gray box label, white blister label & vial cap)	3.0mm (gray internal hex & cover cap)
3.4mm (purple box label, blister label & vial cap)	3.0mm (gray internal hex & cover cap)
3.8mm (yellow box label, blister label & vial cap)	3.5mm (yellow internal hex & cover cap)
4.6mm (green box label, blister label & vial cap)	4.5mm (green internal hex & cover cap)
5.8mm (blue box label, blister label & vial cap)	5.7mm (blue internal hex & cover cap)

Tapered Tissue Level Product Labeling



body diameter	prosthetic platform
3.0mm (gray box label, white blister label & vial cap)	3.5mm (yellow internal hex & cover cap)
3.8mm (yellow box label, blister label & vial cap)	3.5mm (yellow internal hex & cover cap)
4.6mm (green box label, blister label & vial cap)	4.5mm (green internal hex & cover cap)
5.8mm (blue box label, blister label & vial cap)	5.7mm (blue internal hex & cover cap)

ORDERING, WARRANTY INFORMATION AND REFERENCES

Product Support Specialist: _____

Cell phone: _____

Fax: _____

BioHorizons Lifetime Warranty on Implants and Prosthetics: All BioHorizons implants and prosthetic components include a Lifetime Warranty. BioHorizons implant or prosthetic components will be replaced if removal of that product is due to failure (excluding normal wear to overdenture attachments).

Additional Warranties: BioHorizons warranties instruments, surgical drills, taps, torque wrenches and Virtual Implant Placement (VIP) treatment planning software.

(1) Surgical Drills and Taps: Surgical drills and taps include a warranty period of ninety (90) days from the date of initial invoice. Surgical instruments should be replaced when they become worn, dull, corroded or in any way compromised. Surgical drills should be replaced after 12 to 20 osteotomies.³

(2) Instruments: The BioHorizons manufactured instrument warranty extends for a period of one (1) year from the date of initial invoice. Instruments include drivers, sinus lift components, implant site dilators and BioHorizons tools used in the placement or restoration of BioHorizons implants.

(3) VIP treatment planning software: VIP treatment planning software warranty extends for a period of ninety (90) days from the date of initial invoice. The warranty requires that VIP be used according to the minimum system requirements.

Return Policy: Product returns require a Return Authorization Form, which can be acquired by contacting Customer Care. The completed Return Authorization Form should be included with the returned product. For more information, please see the reverse side of the invoice that was shipped with the product.

Disclaimer of Liability: BioHorizons products may only be used in conjunction with the associated original components and instruments according to the Instructions for Use (IFU). Use of any non-BioHorizons products in conjunction with BioHorizons products will void any warranty or any other obligation, expressed or implied.

Treatment planning and clinical application of BioHorizons products are the responsibility of each individual clinician. BioHorizons strongly recommends completion of postgraduate dental implant education and adherence to the IFU that accompany each product. BioHorizons is not responsible for incidental or consequential damages or liability relating to use of our products alone or in combination with other products other than replacement or repair under our warranties.

Compu-Guide surgical templates are ordered under the control of a Clinician. The Clinician recognizes responsibility for use. Therefore, regardless of the real or proven damages, the liability to BioHorizons is limited to the price of the product directly related to the reason for the claim.

Distributed Products: For information on the manufacturer's warranty of distributed products, please refer to their product packaging. Distributed products are subject to price change without notice.

Validity: Upon its release, this literature supersedes all previously published versions.

Availability: Not all products shown or described in this literature are available in all countries. BioHorizons continually strives to improve its products and therefore reserves the right to improve, modify, change specifications or discontinue products at any time.

Any images depicted in this literature are not to scale, nor are all products depicted. Product descriptions have been modified for presentation purposes. For complete product descriptions and additional information, visit shop.biohorizons.com.

References

1. Osseointegration on metallic implant surfaces: effects of microgeometry and growth factor treatment. SR Frankel, J Simon, H Alexander, M Dennis, JL Ricci. *J Biomed Mater Res.* 2002;63(6): 706-13.
2. The influence of 0.12 percent chlorhexidine digluconate rinses on the incidence of infectious complications and implant success. Lambert PM, Morris HF, Ochi S. *J Oral Maxillofac Surg* 1997;55(12 supplement 5):25-30.
3. Heat production by 3 implant drill systems after repeated drilling and sterilization. Chacon GE, Bower DL, Larsen PE, McGlumphy EA, Beck FM. *J Oral Maxillofac Surg.* 2006 Feb;64(2):265-9.
4. Root Form Surgery in the Edentulous Mandible: Stage I Implant Insertion. CE Misch. *Contemporary Implant Dentistry Second Edition.* Mosby: St. Louis, 1999. 347-369.

Direct Offices

BioHorizons USA
888-246-8338 or
205-967-7880

BioHorizons Canada
866-468-8338

BioHorizons Spain
+34 91 713 10 84

BioHorizons UK
+44 (0)1344 752560

BioHorizons Germany
+49 761-556328-0

BioHorizons Australia
+61 2 9317 6800

BioHorizons Chile
+56 (2) 23619519

Distributors

For contact information in our 85 markets, visit www.biohorizons.com



BioHorizons®, Laser-Lok®, MinerOss®, AutoTac® and Mem-Lok® are registered trademarks of BioHorizons. Unigrip™ is a trademark of Nobel Biocare AB. Zimmer® Dental ScrewVent® and Tapered ScrewVent® are registered trademarks of Zimmer, Inc. AlloDerm® and AlloDerm GBR® are registered trademarks of LifeCell Corporation. The ARTISAN™ Space Maintenance System and Grafton® DBM are registered trademarks of Medtronic, Inc. INFUSE® Bone Graft, the PROGENIX® Family of Grafts, and the MASTERGRAFT® Family of Products are registered trademarks of Medtronic Sofamor Danek Inc. Spiralock® is a registered trademark of Spiralock Corporation. Pomalux® is a registered trademark of Westlake Plastics Co. Locator is a registered trademark of Zest Anchors, Inc. Delrin® is a registered trademark of E.I. du Pont de Nemours and Company. LADDEC® is a registered trade mark of OST-Développement. LADDEC® is manufactured by OST-Développement. MinerOss® Cancellous and MinerOss® Cortical are processed by DCI Donor Services Tissue Bank. Mem-Lok® is manufactured by Collagen Matrix, Inc. Not all products shown or described in this literature are available in all countries. As applicable, BioHorizons products are cleared for sale in the European Union under the EU Medical Device Directive 93/42/EEC and the tissues and cells Directive 2004/23/EC. We are proud to be registered to ISO 13485:2003, the international quality management system standard for medical devices, which supports and maintains our product licences with Health Canada and in other markets around the globe. Original language is English. ©BioHorizons. All Rights Reserved.



L02024



REV B JUN 2015

shop online at
www.biohorizons.com