

# INDIRECT TRANSFER WITH THE 3INONE ABUTMENT / BALL-TOP SCREW

**Procedure Objective:** Make an impression for fabrication of a working cast utilizing a closed-tray, indirect transfer method when a regular emergence Healing Abutment was used. The procedure creates a cast that represents the exact position of the implant as well as the orientation of the internal hex.

## 1. Remove Healing Abutment



Remove the regular emergence Healing Abutment with the .050" (1.25mm) Hex Driver. Confirm that the implant's prosthetic platform is free of bone debris or soft tissue.

## 2. Place Transfer Coping

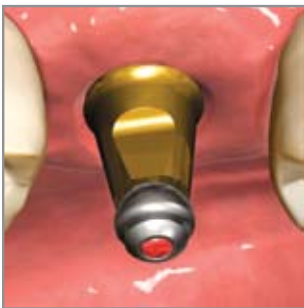


Seat the 3inOne Abutment and secure it with a Ball-top Screw (hand-tighten).

If practical, orient the long flat side of the abutment to the facial for easier indexing.

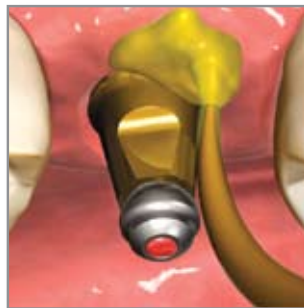
Radiographically verify correct seating of the abutment.

## 3. Block out hex hole



Block out the hex-hole on top of the Ball-top Screw with a material of choice.

## 4. Make full-arch impression



Syringe a light-body elastomeric impression material around the coping assembly. Record the full arch impression using the closed tray loaded with heavier body impression material.

Remove the coping assembly after the tray has been removed. Replace the Healing Abutment immediately to prevent soft tissue collapse.

## 5. Assemble coping and analog



Use the Ball-top Screw to assemble the 3inOne Abutment with the corresponding Implant Analog.

## 6. Index coping into impression



Insert the coping assembly into the corresponding location in the impression, ensuring that the long flat of the abutment aligns with the corresponding indice within the impression.

Send the impression, coping/analog assembly, abutment screw, bite registration and opposing model to the lab.

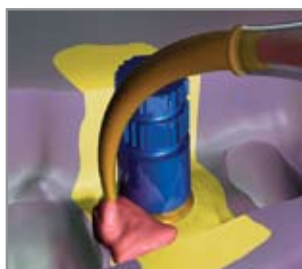
## Lab Steps



### Send to Lab

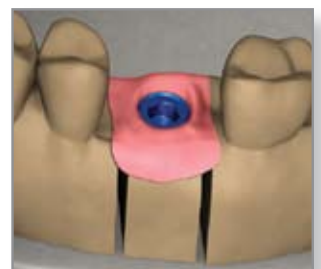
- Impression
- 3inOne/Ball-top Screw combo
- Abutment Screw (comes with 3inOne)
- Implant Analog
- Bite Registration
- Opposing model or impression
- Shade selection

## 7. Create soft tissue model

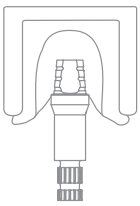


A soft tissue replica material is recommended around the analog. Verify analog seating and apply lubricant where soft tissue replica material is to be applied.

## 8. Fabricate working cast



Fabricate a working cast. Articulate according to standard laboratory procedures.



## INDIRECT TRANSFER WITH THE INDIRECT TRANSFER COPING

**Procedure Objective:** Make an impression for fabrication of a working cast utilizing a closed-tray, indirect transfer method. The procedure creates a cast that represents the exact position of the implant as well as the orientation of the internal hex.

### 1. Remove Healing Abutment



Remove the Healing Abutment with the .050" (1.25mm) Hex Driver. Confirm that the implant prosthetic platform is free of bone debris or soft tissue.

*The emergence of the impression coping selected should match the emergence of the Healing Abutment and the intended final abutment (either Narrow, Regular or Wide). Custom Cast emergence will be determined by the lab prescription.*

### 2. Place Transfer Coping



Seat the Indirect Transfer Coping and secure it with the included screw (hand-tighten).

If practical, orient the long flat side of the coping to the facial for easier indexing.

Radiographically verify correct seating of the abutment.

### 3. Block out screw hole



Block out the screw access hole of the Indirect Transfer Coping with a material of choice.

### 4. Make full-arch impression



Syringe a light-body elastomeric impression material around the coping assembly. Record the full arch impression using the closed tray loaded with heavier body impression material.

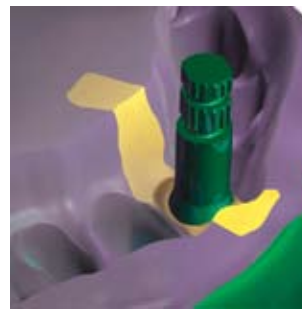
Remove the coping assembly after the tray has been removed. Replace the Healing Abutment immediately to prevent soft tissue collapse.

### 5. Assemble coping and analog



Assemble the Indirect Transfer Coping with the appropriate diameter Implant Analog using the included screw with the .050" (1.25mm) Hex Driver.

### 6. Index coping into impression



Insert the coping assembly into the corresponding location in the impression, ensuring that the flat of the coping aligns with the corresponding indice within the impression.

Send the impression, coping/analog assembly, bite registration and opposing model to the lab.

## Lab Steps



### Send to Lab

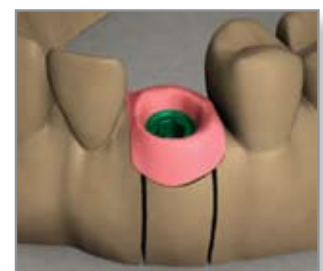
- Impression with coping inside
- Coping Screw
- Implant Analog
- Abutment and Screw (if selected)
- Bite Registration
- Opposing model or impression
- Shade selection

### 7. Create soft tissue model

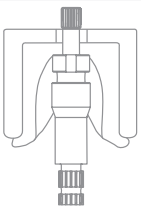


A soft tissue replica material is recommended around the analog. Verify analog seating and apply lubricant where soft tissue replica material is to be applied.

### 8. Fabricate working cast



Fabricate a working cast. Articulate according to standard laboratory procedures.



## DIRECT PICK-UP

**Procedure Objective:** Make an impression for fabrication of a working cast utilizing an open-tray, direct pick-up method. The procedure creates a cast that represents the exact position of the implant. Hex orientation may be registered (single-unit) or bypassed (multiple-units) depending on the coping selected.

### 1. Remove Healing Abutment



Remove the Healing Abutment with the .050" (1.25mm) Hex Driver. Confirm that the implant prosthetic platform is free of bone debris or soft tissue.

*The emergence of the impression coping selected should match the emergence of the Healing Abutment and the intended final abutment (either Narrow, Regular or Wide). Custom Cast emergence will be determined by the lab prescription.*

### 2. Place Pick-up Coping



Place the appropriate diameter Direct Pick-up Coping (either hexed or non-hexed) on the implant body and retain with the corresponding Direct Pick-up Coping Screw (hand-tighten).

These screws feature a knurled top to aid in manual insertion, as well as a .050" (1.25mm) hex access hole for insertion with the Hex Driver.

Radiographically verify correct seating of the coping.

### 3. Verify screw/tray clearance



A stock impression tray may be modified for this procedure, or a custom tray may be fabricated using a tray material of choice. A window is cut out of the tray to allow clearance for the coping screw.

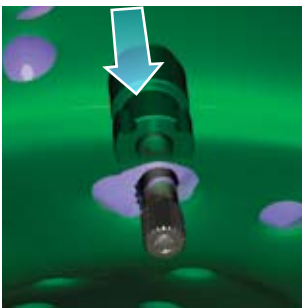
Try in the impression tray to verify that the coping screw protrudes through it without interference.

### 4. Make full-arch impression



Syringe a light-body elastomeric impression material around the coping assembly. Record the full arch impression with the tray loaded with heavier body impression material.

### 5. Remove impression tray from mouth



After the impression material has set, first remove the coping screw, and then remove the tray from the mouth. Verify that the impression material is completely adapted around the pick-up copings.

Replace the Healing Abutment immediately to prevent soft tissue collapse.

### 6. Attach analog to Pick-up Coping



Assemble the appropriate diameter Implant Analog to the Direct Pick-up Coping with the coping screw.

Send the impression/coping assembly, bite registration and opposing model to the lab.

## Lab Steps



### Send to Lab

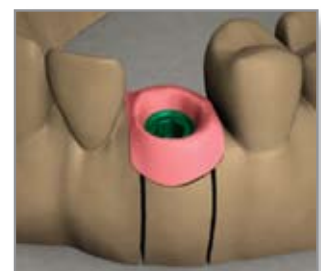
- Impression with coping inside
- Coping Screw
- Implant Analog
- Abutment and Screw (if selected)
- Bite Registration
- Opposing model or impression
- Shade selection

### 7. Create soft tissue model



A soft tissue replica material is recommended around the analog. Verify analog seating and apply lubricant where soft tissue replica material is to be applied.

### 8. Fabricate working cast

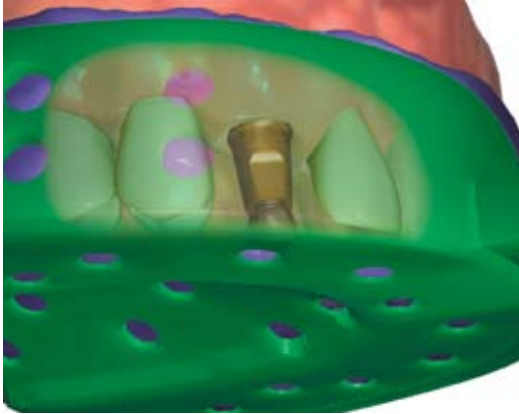


Fabricate a working cast. Articulate according to standard laboratory procedures.

## IMPRESSION TECHNIQUE OVERVIEW

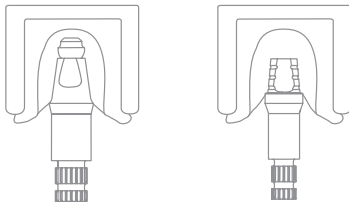
**Procedure Objective:** This guide provides you with 3 of the most common impression techniques using the BioHorizons Internal implant system. Additional impression techniques can be found in the BioHorizons Internal Prosthetic Manual, available for downloading from [www.biohorizons.com](http://www.biohorizons.com) or by contacting us at 888-246-8338.

### Closed Tray (Indirect) Transfer

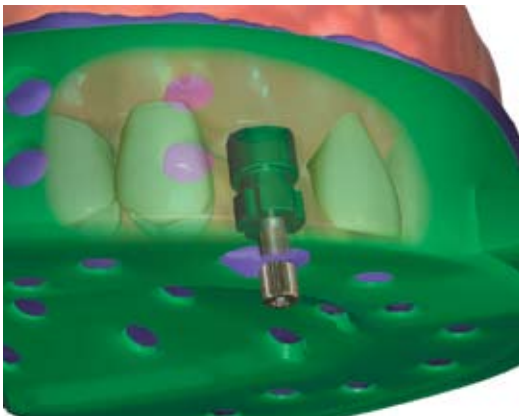


This indirect impression technique records the soft tissue profile as well as the implant's location. The implant's internal hex orientation is transferred when using the *3inOne* Abutment with a Ball-top Screw or any of the Indirect, Hexed (Closed Tray) Copings. *If the hex location is not needed for the prosthesis fabrication, the Direct Pick-up, Non-hexed (Open Tray) Coping may be used (described below).*

In this technique, the Indirect Transfer Coping remains in the mouth after the impression is removed from the mouth. The coping is then removed from the mouth and connected with the appropriate Implant Analog. The coping/ analog assembly is then indexed (transferred) into its corresponding position in the impression. A working model is poured in dental stone, providing a replica of the implant's location in the patient's mouth.

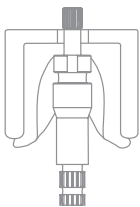


### Open Tray (Direct) Pick-up



This impression technique records the soft tissue profile as well as the implant's location. The implant's internal hex orientation is transferred when using the Direct Pick-up Hexed (Open Tray) Copings. *If the hex location is not needed for the prosthesis fabrication, the Direct Pick-up Non-Hexed (Open Tray) Copings are used.*

In this technique, the Direct Pick-up Coping remains in the impression when it is removed from the mouth. For this technique, a custom tray or modified stock tray with a screw access hole in the area above the implant is required. The Direct Coping Screw that holds the Direct Pick-up Coping in place while the impression is made is removed through the access hole after the material sets. The impression is removed with the Direct Pick-up Coping embedded within the impression. The Implant Analog is connected to the embedded coping and a working model is poured in dental stone, providing a replica of the implant's location in the patient's mouth.



**BioHorizons USA**

2300 Riverchase Center  
Birmingham, AL 35244

**Customer Care / Servicio al Cliente:**  
**888-246-8338 or 205-967-7880**

**BioHorizons Canada**

21 Amber Street, Unit # 6  
Markham, Ontario L3R 4Z3

**Customer Care / Service à la Clientèle:**  
**866-468-8338 or / ou 905-944-1700**

**BioHorizons Spain**

Serrano Anguita, 10  
28004 Madrid, España

**Atención al Cliente:**  
**+34 91 713 10 84**

**BioHorizons UK**

17 Wellington Business Park  
Dukes Ride  
Crowthorne, Berkshire RG45 6LS

**Customer Care:**  
**+44 1344 752560**

**BioHorizons Germany**

Marktplatz 3  
79199 Kirchzarten

**Kunden Service:**  
**+49 7661-909989-0**

**BioHorizons Australia**

25-33 Allen Street  
Waterloo NSW 2012

**Customer Care:**  
**+61 2 8399 1520**

**BioHorizons Mexico**

Kelvin 8 Dept. 303  
Col. Anzures  
C.P. 11590, Mexico, D.F.

**Servicio al Cliente:**  
**+52 55 5545 1297**

**BioHorizons Chile**

Cerro Colorado 5030, Oficina 513  
Las Condes  
Santiago, Chile

**Atención al Cliente:**  
**+56 2 361 9519**

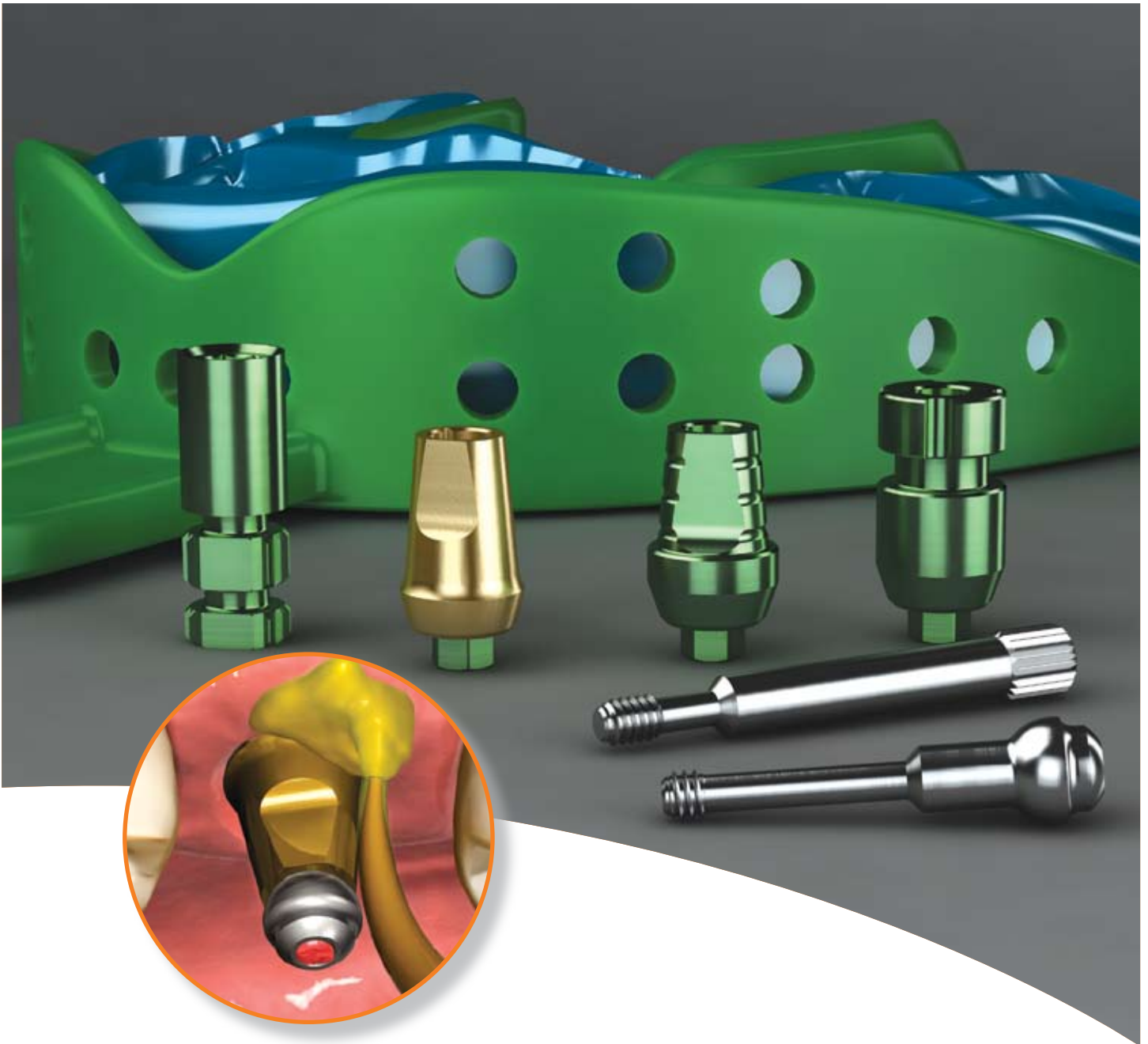
BioHorizons products are cleared for sale in the European Union under the EU Medical Device Directive 93/42/EEC. We are proud to be registered to ISO 13485:2003, the international quality management system standard for medical devices, which supports and maintains our product licences with Health Canada and in other markets around the globe.

© 2008 BioHorizons Implant Systems, Inc. All Rights Reserved. ML0206 REV B SEPT 2008

**w w w . b i o h o r i z o n s . c o m**



# BioHorizons Internal Impression Technique Guide



**BIOHORIZONS**<sup>®</sup>  
SCIENCE • INNOVATION • SERVICE

